

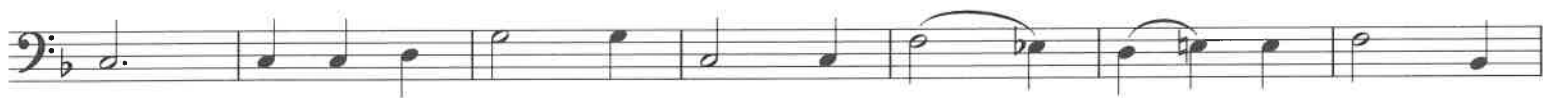
# 30 ORIGINAL CHORALES AND WARM-UPS

Euphonium

Philip Sparke



# Euphonium



# Euphonium



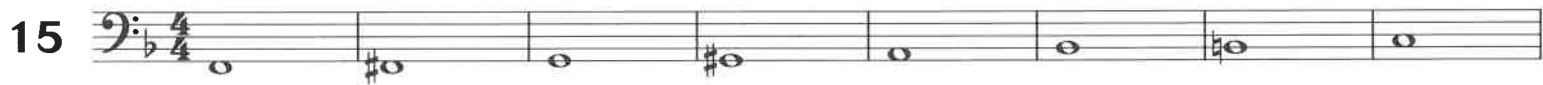
# Euphonium

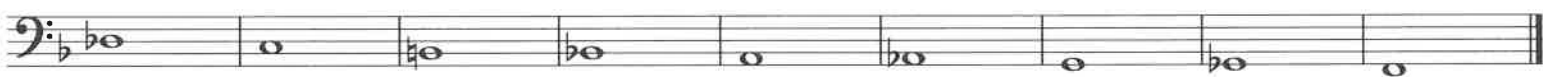
13 



14 



15 



16 





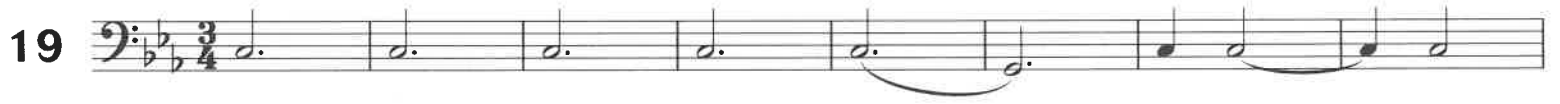
# Euphonium

17 



18 



19 



20 



# Euphonium

21

21

22

22

23

23

# Euphonium

24

Musical notation for Euphonium, measures 24-27. The music is in bass clef, key of B-flat major (two flats), and 3/2 time. It consists of four staves of music. The first staff starts with measure 24. The melody is composed of eighth and sixteenth notes, often beamed together in pairs or groups of four, with slurs over the phrases. The second staff continues the melody. The third staff continues the melody. The fourth staff concludes the phrase with a double bar line.

25

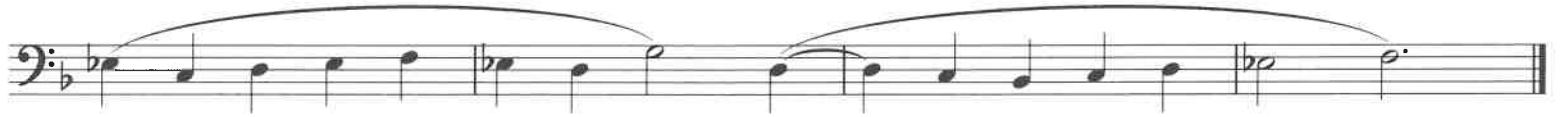
Musical notation for Euphonium, measures 28-31. The music is in bass clef, key of B-flat major (two flats), and 4/4 time. It consists of four staves of music. The first staff starts with measure 28. The melody is composed of eighth and sixteenth notes, often beamed together in pairs or groups of four, with slurs over the phrases. The second staff continues the melody. The third staff continues the melody. The fourth staff concludes the phrase with a double bar line.

26

Musical notation for Euphonium, measures 32-35. The music is in bass clef, key of B-flat major (two flats), and 4/4 time. It consists of two staves of music. The first staff starts with measure 32. The melody is composed of quarter and eighth notes, with slurs over the phrases. The second staff continues the melody and concludes with a double bar line.

# Euphonium

27 



28 



29 



30 



